

Canaveral Moonstone



Presidents Corner

Please read the whole moonstone to see all the great things that are going on with the club! It's been a super exciting month for the club.



Our club rock swap is taking place on March 29th at Wickham park pavilion 4 from 9am-3pm. It's going to be a great day in the park so come on out and support our club members that are trying to offload some rocks!

Dolly's picnic will be at Riverview park on Sunday April 27th. Bring items of value that we can auction off to raise money for the club. You must take your unsold items home with you at the end of the day. There will be free hamburgers and hotdogs and another incredibly fun day in the park! Please bring a side dish or desert to share.

We will be voting to welcome on our new treasurer, Candice Walker, at the upcoming meeting. We are super excited to have her expertise and we are so glad she is stepping up to do this so say hi to her at the meeting.



It is important that everyone make an effort to bring new members to the club. Bring your friends, bring your family, and if you see someone rocking some cool jewelry or gemstones, stop and tell them about the club. Outreach is critical to bringing new members to our club and keeping it alive. We have seen some great engagement from our new members.

Open shop is still Mondays night, Thursday night, and Saturday morning. The shop fee is still only \$10. Please come by the shop! We are always happy to show our shop to new members and visitors. If you aren't yet certified to use the machines, you can still come by just to hang out at no charge.



The Rucks Pit Crystal Clam Festival is happening April 10-13th at the original Rucks pit site. Diggings from the pit have sat I disturbed for over a decade waiting for us to come and get those sweet crystal clams! The cost for the event is 475\$ per day and you are limited to one bucket of material plus \$25 of matrix per day. There is no water or electricity on site. The company that is running the event is called Pacific Geo Labs and you can find more information at pacificgeolabs.com.

The Dixie mineral council field trip was a success and at least one of our members found rose quartz and tourmaline. The information for the next DMC field trip has been sent to members via email. For those of you that don't know, the DMC is made up of clubs in the southern region of the United States and they provide field trips for club members.



Links to CMGS

The Peace River is very low right now making it ideal for fossil hunting. If anyone wants to go to the Peace River please contact me (James) and we will make a trip out of it. Last year's peace River field trips were poorly attended so I will need to see some more interest in order to justify another club trip.

James Hislop

Exchange Bulletins are Welcome

(All material may be copied unless otherwise noted if credit is given)

The Dead Line for the May Moonstone is April 20, 2025

The URL for CMGS web site is: <http://www.canaveral-mgs.com/>

The **Canaveral Mineral and Gem Society (CM&GS)** is a registered Florida not-profit-corporation approved by the Internal Revenue Service as a tax exempt , organization under Internal Revenue Code section of Florida 501 (c) (7) for the following purposes:

1. For the preservation, support, and promotion of the hobby of Mineralogy and its various forms of allied activities and earth sciences.
2. To dedicate ourselves to the furtherance of the hobby through the exchange of knowledge, experience, and other helpful information among ourselves and other like organizations.
3. To further the education of members and the general public of the hobby by programming talks, discussions, motion pictures, field trips, and the staging of shows and exhibitions.
4. To maintain an active affiliation with the Southeast Federation of Mineralogical Societies and to participate in Federation activities to the fullest extent possible.

Goals and Objectives

5. To promote the spirit of cooperation and fellowship among the membership.
6. To increase our knowledge of rocks and minerals and to explore the mystery and wonder of the earth.
7. To actively encourage members to attend educational classes, workshops, lectures, and demonstrations.
8. To stimulate interest in the earth sciences within the community by providing scholarships to worthy students at all educational levels.
9. To provide the necessary equipment and resources to enable members to develop their interests.
10. To enjoy our hobby and Have Fun!

Affiliations

The Canaveral Mineral and Gem Society is a member of the Southeast Federation of Mineralogical Societies (SFMS) and the American Federation of Mineralogical Societies (AFMS)

Meetings and Dues

Meetings are the First Wednesday of each month at the Melbourne Front Street Civic Center. Meetings start at 7:00 p.m. Visitors are always welcome! Dues are shown below and are paid annually.

Active members \$ 40.00

Associate Type 1 \$ 10.00-related to an active or honorary member, be under the age of eighteen .

Associate Type 2 \$ 20.00 - 13 – 18 years

April 2025

Sun Mon Tue Wed Thu Fri Sat

		1	2 Monthly Meeting 7PM	3 Open Shop 5:30—9:30pm	4	5 Open Shop 8:30am—12:30pm
6	7 Open Shop 5:30—9:30pm	8	9	10 Open Shop 5:30—9:30pm	11	12 Open Shop 8:30am—12:30pm
13	14 Open Shop 5:30—9:30pm	15	16	17 Open Shop 5:30—9:30pm	18	19 Open Shop 8:30am—12:30pm
20	21 Open Shop 5:30—9:30pm	22	23	24 Open Shop 5:30—9:30pm	25	26 Open Shop 8:30am—12:30pm
27	28 Open Shop 5:30—9:30pm	29	30			

This Months presentation

Aiden Rouse will be presenting Florida Fossilized: Making of a Prehistoric Frontier at the meeting on Wednesday.

MINERAL OF THE MONTH SHATTUCKITE

Shattuckite is a rare copper silicate hydroxide mineral, that is formed as a secondary mineral resulting from an alteration of other secondary copper minerals, forming as a pseudo morph after malachite. Shattuckite can form as granular or fibrous crystals with a coloration range from dark to light blue, most often it is the color of turquoise with a dull to silky appearance and has a MOHS hardness of 3.5.



Canaveral Mineral and Gem Society
March 5th, 2025 Meeting Minutes

President James Hislop opened the meeting Wednesday, March 5th, at 7:03 p.m. at the Front Street Civic Center, 2205 Front Street, Melbourne, FL 32901.

President James Hislop announced that our treasurer, Kim Kisselstein, will be resigning and we are looking for a replacement. Please let one of the board members know if you are available to help in that position.

James decided not to take the traveling job position. He will remain in his position as President!

Vice President – Lynn McKinney-the speaker for tonight could not come this evening. Lynn showed an interesting utube video about different types of opals.

Secretary- Mary Kinberg – The February minutes were printed in the March Moonstone. Since no one had any changes or amendments, the minutes stand as printed.

Treasurer-Kim Kisselstein – Kim sent out the treasurer’s report to the board members.

Education Director - Yvonne Alexander –Thanks to everyone who volunteered to work on the inventory. Thanks Scott Bellinger and Joe Gallo for installing the counter in the cabbng room. Also please bring cotton t- shirts or rags for us to cut down on paper towel usage at the shop. Instructors please check your email and share your thoughts. All silversmithing stations now have flexshafts set up.

Dolly’s picnic is going to be April 27th . Please mark your calendar and begin collecting donations for the auction.

Heather DeVries reminded us to take pictures and share the pictures when they’re in the field mining and /or at a gem show. We can post it and connect it with our CMGS website. Please send it to James Hislop, Yvonne Alexander or Heather if you have a problem.

Our rock swap will be March 29th. The Central Brevard Rock Club will be setting up with us. There are still seven tables are still available. A table will be \$30 and it will be held at Wickham Park at Pavilion 4, near the dog park. Only members are allowed to be vendors. Please invite friends and family.

Mineral of the Month – Scott Bellinger –Ludlamite is a rare phosphate mineral. This mineral is found world-wide and has a hardness of 3.5

Show and Tell - Thanks for sharing your projects!

Scott Belinger shared the mineral of the month, Ludlamite.

Bill Harr shared huge pieces of Ocean Jasper.

Lynn McKinney took saw class with Yvonne Alexander and took mold making with Bill Harr. Lynn showed the items he made.

James Hislop is setting up monthly field trips to different mines. He shared some of his rocks, including a large piece of rose quartz.

Art DeLaurentis shared a Viking weave bracelet - he soldered the three end strands into one piece at each end. He also shared a silver bracelet set with pink stone and labradorite.

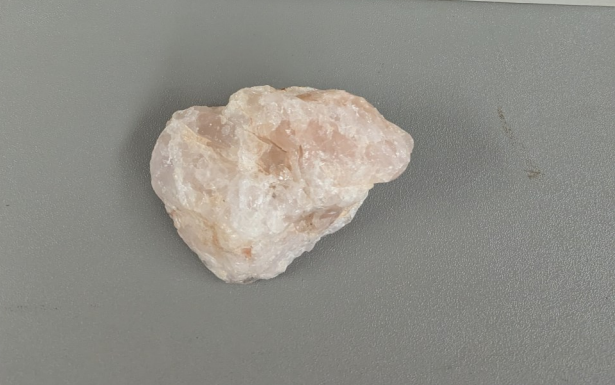
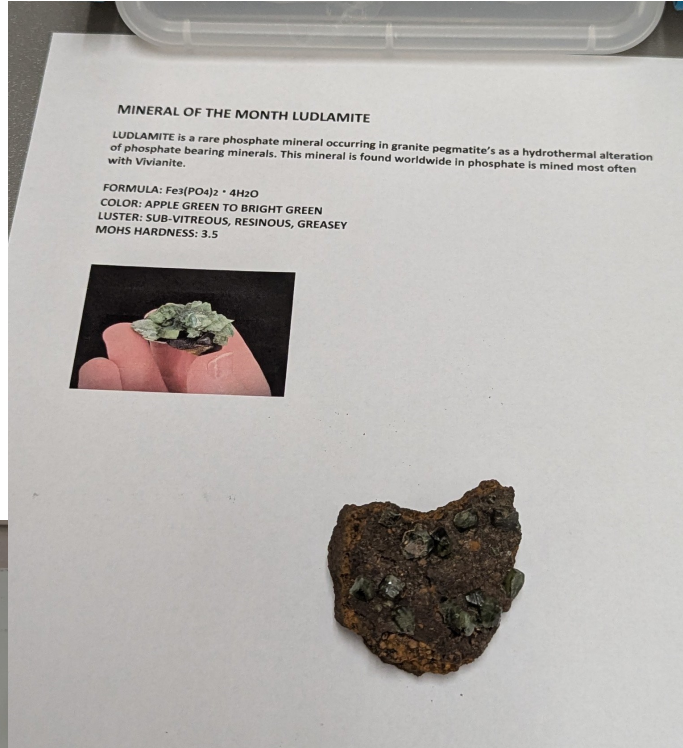
Melissa Horan explained about a program that her daughter showed her called Procreate. She made some earrings with the help of this program.

Shannon Byrd took Mark Heathman's class on faceting. She has been cutting stones and faceting. Joe Bina took intarsia class from Kevin Vogt and has been cutting very thin cabs for Kevin. Betsy Rodriques talked about a New Mexico stone called blue agate from the Bedazzled Mining company and shared many pieces including some she made. Simon took casting and mold making from Bill Harr and showed his work.

The meeting ended at 8:30 pm.

Mary Kinberg
Secretary

Show and Tell



Show and Tell



Show and Tell



Loss of a beloved member

Katherine Ray Meredith McLamb departed this earth and went directly into the loving arms of Jesus on March 1, 2025. She was at home, surrounded by her devoted husband and beloved children.

Kitty was a beautiful person. She and Don contributed to CMGS for many years. She will be missed.

<https://www.dignitymemorial.com/obituaries/rockledge-fl/katherine-mclamb-12268569>

Dolly's Picnic

Riverview park April 27th

Our annual Dolly's picnic and auction will take place at Riverview park on April 27th from 9am-3pm. Free hotdogs and hamburgers will be served! Make sure to thank chef Joe! The new bathrooms should be operational. We ask members to bring items to auction off to raise money for the club. Bring your friends and family as well as potential new members! This is going to be a fun event rain or shine so we look forward to seeing you all there! Bring a dish to share, side dishes and deserts are always welcome.

Donations Needed

Donations Needed for Dollys Picnic (April) and the Silent Auction (November)

Silent Auction donations: Please bring donations to the monthly meeting or (if larger amounts) arrangements can be made to pick them up. Contact Michael McKeon at memckeon@yahoo.com

Items we need for the auctions include:

Rocks of any kind

Crystals / Gems

Beads and beading findings

Craft Items

Tools and kits

Interesting odds and ends

Jewelry Items

Classes Completed

Saw Piercing : Cheryl Snyder, Vincent DiDio, and Lynn McKinney

Wire Wrap : Pat Shannon and James Hislop

Rocky is the pet of the month for April. He is great, he makes me smile everyday.

Shannon



Both “**Rock of the month**” and “**Pet of the month**” will be discontinued due to a lack of participation if I don't receive any photos for May.

Bench Tips by Brad Smith

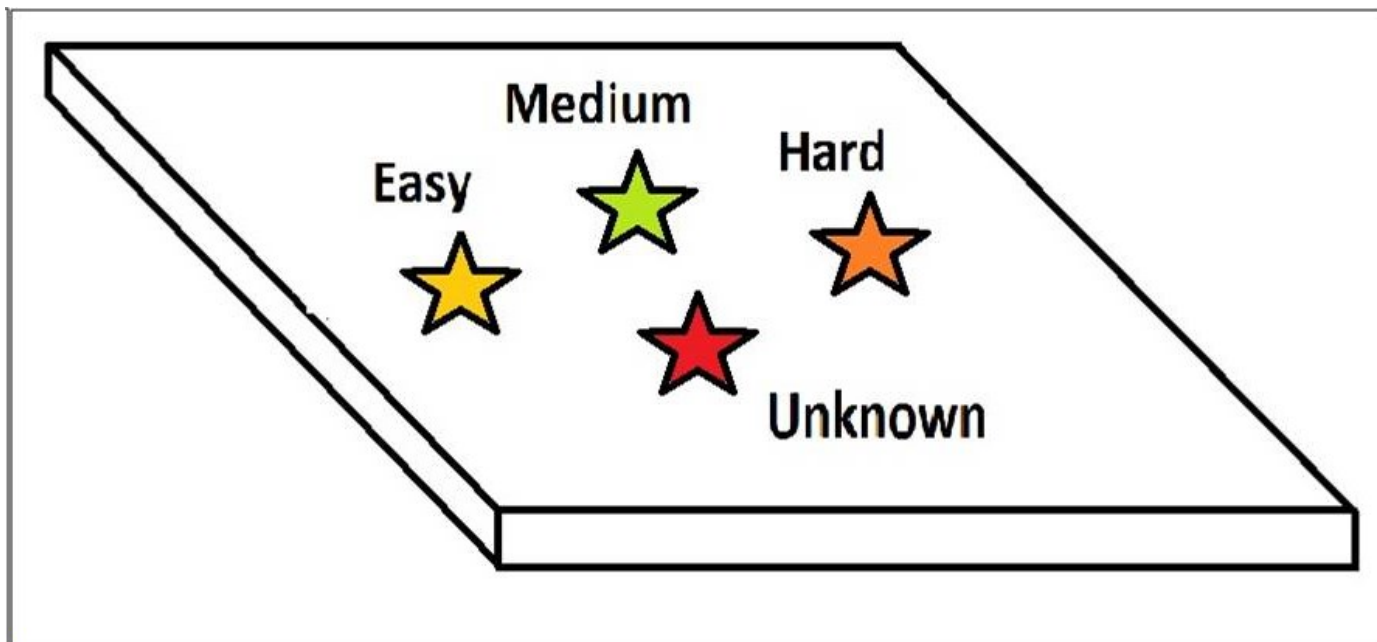
Work Smarter & Be More Productive With Brad's "How To" Jewelry Books

See Other Tips in my Smart Solutions for Jewelry Making Problems

<http://amazon.com/dp/B0BQ8YVLTJ>

There are plenty of ways to mark your sheet or wire solders, but suppose you forgot to mark them and have a couple that you can't identify. The answer is to compare the melting temperature of the unknowns with that of a known solder.

What I do is take a thick scrap of copper or nickel and arrange several solders on it. Ideally, I would have a sample of easy, medium and hard known solders surrounding the unknown piece. Then I heat the plate from the bottom and watch the order in which the solders melt.



Solve Your Jewelry Making Problems
With Brad's "How To" Books

www.amazon.com/author/bradfordsmith



Up Coming Gem Shows

Tampa Bay Gem, Mineral & Jewelry Show

04/05/25 04/06/25

Tampa,Florida

Florida State Fairgrounds Special Events Center
Tampa Florida United States

Panhandle Gem & Mineral Show (PGMS)

04/11/25 04/13/25

Panama City,Florida

Central Panhandle Fairgrounds in Bay County
Panama City Florida United States

Central Florida Mineral & Gem Society Gem, Mineral, & Bead Show

04/26/25 04/27/25

Orlando,Florida

Florida National Guard Armory Orlando Florida United States

SFMS Workshops can be viewed at this link:

www.sfmsworkshops.org

This is both Wildacres and Willam Holland.

You were also emailed the class information for both.

CMGS Contacts

President: James Hislop (407)797-2391

Vice President: Lynn McKinney

Secretary: Mary Kinberg

Treasurer: Kim Kisselstein

Bulletin Editor: Shannon Byrd (321) 223-4007

Membership Chairman: Kathie Burnette

Education Chairman: Yvonne Alexander

Corresponding Secretary: Stephanie Murphy

Board of Directors 3yr: Wayne Mellish

Board of Directors 2yr: Liz Ritter (321) 544-2036

Board of Directors 1yr: Scott Bellinger

Librarian: Matty Loss

Bulletin Editor

Shannon Byrd

2225 Ladner Rd NE

Palm Bay, FL 32907

Email: shannonb787@gmail.com

The Canaveral Mineral and Gem Society meets at 7 pm on the First Wednesday of each month at the Front Street Civic Center, Melbourne, Florida. Visitors are always welcome.

CANAVERAL MINERAL & GEM SOCIETY
NEWSLETTER: MOONSTONE