

Canaveral Moonstone



Presidents Corner



Last month kept me busy! I had the opportunity to visit my family in New Jersey (After all our vaccines had been administered, finally). We traveled into Philadelphia to enjoy the Liberty Bell Museum and had lunch at Redding terminal. You cannot go to Philly without enjoying a Philly cheesesteak in the city! We also spent some time in a small town called Smithville enjoying the renaissance fair that was there. While cruising through the booths I stumbled upon a vendor selling crystals and I found the most gorgeous double terminated quartz! She was a member of the Cape-Atlantic Rockhounds Inc. As much as I wanted to stay and talk with her, the other members of my family quickly recognized that I could stand and talk with her for the duration of my trip, so I was hesitantly dragged away !

As of this writing we are less than three weeks away from our annual Dollies Picnic/Auction. I am encouraged by the donations we have received so far however I urge all of you to consider donating to your club for this annual fundraiser and fun-filled day! To re-iterate the comments from our previous meeting and Moonstone publication, food will not be served however picnic lunches are recommended. Tailgating (which is highly encouraged) will start 9AM and the live auction will start at 1PM. Goode Park is located at the end of Bianca Drive, Palm Bay FL 32905. There is ample room at the park for sitting chairs so if you want to soak up the sun, please be sure to bring your own chairs. In previous years, my children have enjoyed seeing the manatees that are usually present at the dock adjacent to the Captains house. There is also a swing set and children's area not far from the pavilion. Should be a great fun day outdoors! I look forward to seeing many of you there.

Hope to see you all Wednesday May 5th for our monthly meeting .

Melissa Horan
2021 CMGS President

Exchange Bulletins are Welcome

(All material may be copied unless otherwise noted if credit is given)

The Dead Line for the June Moonstone is May 20, 2021.

The URL for CMGS web site is: <http://www.canaveral-mgs.com/>

The **Canaveral Mineral and Gem Society** (CM&GS) is a registered Florida not-profit-corporation approved by the Internal Revenue Service as a tax exempt , organization under Internal Revenue Code section of Florida 501 (c) (7) for the following purposes:

1. For the preservation, support, and promotion of the hobby of Mineralogy and its various forms of allied activities and earth sciences.
2. To dedicate ourselves to the furtherance of the hobby through the exchange of knowledge, experience, and other helpful information among ourselves and other like organizations.
3. To further the education of members and the general public of the hobby by programming talks, discussions, motion pictures, field trips, and the staging of shows and exhibitions.
4. To maintain an active affiliation with the Southeast Federation of Mineralogical Societies and to participate in Federation activities to the fullest extent possible.

Goals and Objectives

5. To promote the spirit of cooperation and fellowship among the membership.
6. To increase our knowledge of rocks and minerals and to explore the mystery and wonder of the earth.
7. To actively encourage members to attend educational classes, workshops, lectures, and demonstrations.
8. To stimulate interest in the earth sciences within the community by providing scholarships to worthy students at all educational levels.
9. To provide the necessary equipment and resources to enable members to develop their interests.
10. To enjoy our hobby and Have Fun!

Affiliations

The Canaveral Mineral and Gem Society is a member of the Southeast Federation of Mineralogical Societies (SFMS) and the American Federation of Mineralogical Societies (AFMS)

Meetings and Dues

Meetings are the First Wednesday of each month (except July and August) at the Melbourne Front Street Civic Center. Meetings start at 7:00 p.m. Visitors are always welcome! Dues are \$30.00. Junior Member dues are \$2.00. Club shop is now located at 255 East Drive, Suite K, Melbourne, FL.

May 2021

Sun	Mon	Tue	Wed	Thu	Fri	Sat
						1 <i>Open Shop</i> 8:30—12:30pm
2	3 <i>Open Shop</i> 5:30—9:30pm	4	5 <i>Open Shop</i> 11am-3pm Meeting at Front Street 7PM	6 <i>Open Shop</i> 5:30—9:30pm	7	8 <i>Open Shop</i> 8:30—12:30pm
9	10 <i>Open Shop</i> 5:30—9:30pm	11	12 <i>Open Shop</i> 11am-3pm	13 <i>Open Shop</i> 5:30—9:30pm	14	15 <i>Open Shop</i> 8:30—12:30pm
16 Dolly's Pic- nic and Auction	17 <i>Open Shop</i> 5:30—9:30pm	18	19 <i>Open Shop</i> 11am-3pm	20 <i>Open Shop</i> 5:30—9:30pm	21	22 <i>Open Shop</i> 8:30—12:30pm
23	24 <i>Open Shop</i> 5:30—9:30pm	25	26 <i>Open Shop</i> 11am-3pm	27 <i>Open Shop</i> 5:30—9:30pm	28	29 <i>Open Shop</i> 8:30—12:30pm
30	31 <i>Open Shop</i> 5:30—9:30pm					

Meetings are being held at the Front Street Civic Center

Keep in mind that social distancing and mask wearing are required for the safety of our members due to Covid19.

Presentation at our May meeting

May 7, 2021 Sharon Jones will give a presentation on the “process” of designing and creating a necklace.

Dolly's Picnic and Auction

Sunday May 16 at Goode Park in Palm Bay

Bring your lunch and enjoy tailgating and visiting with your friends followed by the auction at 1 PM.

Please bring donations for the auction to the monthly meeting May 5.

Message from our Webbie Sharon Jones

<https://www.facebook.com/Canaveralmgs/>

Sharon is putting together a team of techies to help with Social Media. If you'd be interested, please send an email to webiecmgs@gmail.com

Facebook:

Show & Tell on our Facebook site <https://www.facebook.com/Canaveralmgs/>

Please post pictures of your creations (& if you have a company name to sell your pieces, include a link to that with your post).

Additionally, if you come across any sites you've found helpful regarding our hobby, please post links and a description of why.

BTW you don't have to have a Facebook account to view our page, but you can't post information if you

Up coming mineral and gem shows

Nov 14—15 Canaveral Mineral and Gem Society

The Canaveral Mineral & Gem Society will present its 46th annual "Parade of Gems" Show & Sales

Location: Melbourne Auditorium 625 East Hibiscus Blvd. , Melbourne, FL 32901

Action: 40+ dealers displaying & selling Jewelry, Gems, Minerals, Crystals, Fossils, Tools, Rocks and Slabs

Admission: \$5.00 Donation

Information: <http://www.canaveral-mgs.com>.

Dealer Setup: November 8; Noon to 6:00pm followed by Member & Dealer Dinner.

November 20 – 21, 2021; West Palm Beach, FL

Gem, Mineral Jewelry, Bead and Fossil Show

Gem & Mineral Society of the Palm Beaches

Sat: 9AM-6PM; Sun: 10-5PM

South Florida Fairgrounds, Expo Center East,

9067 Southern Blvd., West Palm Beach, FL 33411

Over 70 dealers, Demonstrations, Exhibits, Geode Cracking, Gemstone Mining, Spin-the-Wheel Game, Kiddie Korner, Face & Rock Painting, Grand Prize Drawing, Door Prizes and several other drawings, Speakers, FREE

**Canaveral Mineral and Gem Society
April 7, 2021 Meeting Minutes**

President Melissa Horan opened the meeting Wednesday, April 7th at 7:06 pm at The Melbourne Front Street Civic Center, Melbourne, FL.

We had two new guests including Madelyn Prather who joined the club.

This month's speaker was Leslie Wayment, who has been a member since 2003. She spoke on Moh's Scale of Mineral Hardness for specific rocks and what hardness number can be used on our machines in the shop. The Moh's scale of hardness is based on the ability of one sample of mineral to scratch another mineral visibly thus identifying the hardness or resistance to scratching. The scale is not for sedimentary rocks. The scale is very soft, #1, talc, to very hard, #10, diamonds. We cannot use corundum, a #9, in the shop on the machines or anything harder than a #9. Leslie also brought in samples for us to try with the Moe's Pick.

Secretary, Mary Kinberg - the March minutes were voted on and approved.

Treasurer, Liz Ritter – Liz went over expenses and outstanding checks. The club is still receiving expenses and checks from POG. If you have bills to turn into Liz, you must have a receipt or you will not get paid.

Education Chairman, Dave Wayment – we now have a new Smith Silver Torch. You don't need to crank it, be gentle so they don't break. We received some donated tools from the Rock Swap and they are now in the workshop.

Membership Chairman, Kathy Burnette - we are at 109 members.

Mark Heathman spoke about the Rock Swap. It was a great success. Thanks Mark for all your hardwork.

Melissa announced that sadly one of our members, Opal Houghton, passed away.

Melissa also announced that we need donations for Dolly's Auction, which will be held Sunday, May 16th at Goode Park. If you want to tailgate, you can put your things out. Please bring your own food and drinks. Because of Covid, no food and drinks will be provided this year.

Dave Jacobson could not speak at the meeting this month. Scott Bellinger spoke on Chalcedony. It is a microcrystalline type of quartz occurring in several different forms, including onyx, agate, and jasper. The information is also in the Moonstone.

Show and Tell: Scott helped introduce everyone's show and tell. Bill Harr brought casting samples to show his casting in different stages. He also showed a flex dispenser that he invented to help control the flow of Borax. Cheryl Synder shared samples of Chalcedony in many different colors. Art Delaurentis shared three exquisite turquoise silver rings he made and a very intricate copper bracelet with patina on it. While working at the shop on Wednesday, Jim Ragan finished some beautiful cabs and shared them with us. Thanks for sharing!! We always learn from sharing ideas and get new ideas for possible projects.

Secretary
Mary Kinberg

Bench Tips by Brad Smith

Work Smarter & Be More Productive With Brad's "How To" Jewelry Books

[Amazon.com/author/bradfordsmith](https://www.amazon.com/author/bradfordsmith)

CHEAPER & BETTER PICKLE

Most jewelers use a granular pickle mixed with water. The active ingredient is sodium bisulfate. This can be purchased online (<http://amzn.to/2HkNTro>) or from local stores as a common pool chemical used for adjusting the acidity of the water. It's sold under various names, so be sure to check the list of active ingredients for a brand that is 95% or more sodium bisulfate.

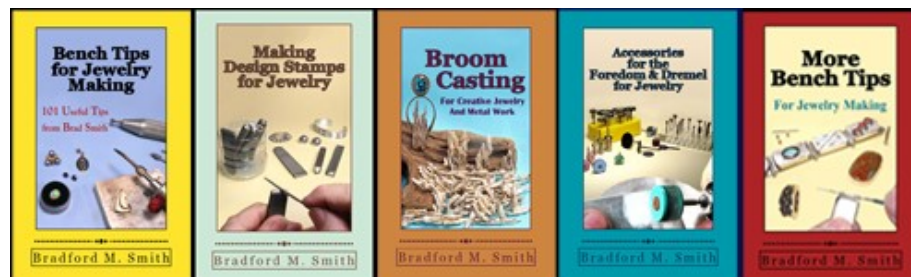
An added benefit is that the pool chemical is more pure in form than what is sold for jewelry use and does not cause the brown grime often found floating on the top of the pot.

BENCH SHEARS

When cutting sheet metal, it's quicker and easier to use a set of shop shears as compared with using a hand saw. The cut is not as precise, but many times you don't need that. Shears will easily cut up to 24 gauge sheet, and some will cut 22 or even 20 gauge.

Current prices for shears run from \$13 - \$36 in jewelry catalogs, and the Joyce Chen scissors recommended on some jewelry blogs run more than \$20. But we found a cheaper alternative at the 99 Cent Store - some gardening utility scissors that were only \$1.07

I buy a half dozen of them at a time for use in my jewelry classes. They're great for cutting bezels, trimming around a bezel cup and cutting a piece off a larger sheet.



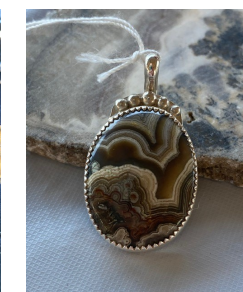
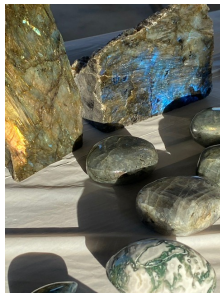
Solve Your Jewelry Making Problems With Brad's "How To" Books

www.amazon.com/author/bradfordsmith

A GOOD TIME WAS HAD BY ALL AT THE ROCKSWAP

MARCH 20, 2021

Thank you for the pictures Melissa



Mineral of The Month – Corundum

By Dave Jacobson

This month we will take a look at corundum,, Al_2O_3 , aluminum oxide. Two of the more famous gemstones are varieties corundum. Ruby is the red variety. All other colored gem grade material is sapphire. It is not until about 1800 that ruby and sapphire were recognized as corundum. Prior to that red spinel and garnet were also considered ruby. Some non-gem grade material is called emery is used as an abrasive. Some associated minerals are calcite, zoisite, feldspars, micas and garnet. Corundum is found in many locations in the word such as Burma; Sri Lanka, Tanzania and other African localities; India; the Middle East and Southeast Asia.

Corundum is found in a variety of deposits such as metamorphic rock, pegmatite's and nepheline syenites. The rock is typically lacking or poor in silicon oxide, which if present would combine to form another mineral. Corundum is also found in alluvial deposits. Many of the facet grade rubies and sapphires are mined in alluvial deposits.

Corundum is the second hardest mineral on the Mohs scale, although diamond the hardest mineral is four times harder than corundum. This due to the strong and short oxygen-aluminum bonds which pull the oxygen and aluminum atoms close together. This makes a tightly bonded structure that results in a hard, dense mineral. Corundum is in the trigonal crystal system. The crystals are typically tapered hexagonal prisms. They are often tabular. The crystal ends are frequently marked with triangular striations. Colors are as follows: Ruby is intense red due to chromium. Blue sapphire is due to iron and titanium trace elements. Colors other than blue are called fancy sapphires. Padparadscha is orange due to chromium plus ferric iron. Alexandrite-like is due to vanadium. Yellow is due to ferric iron (or defects). Green is due to ferrous plus ferric iron (and defects). Colorless is pure, no trace elements. Hardness is 9. Specific gravity is 3.9 to 4.1. Streak is white.

Corundum takes it's name from the Tamil word kuruntam which is derived from the Sanskrit kuruvinda meaning "ruby".

I used the following reference materials in preparing this article:

A Field Guide to Rocks And Minerals by Frederick H. Pough. Mineralogy for Amateurs by John Sinkankus.

Simon & Schuster's Guide to Rocks And Minerals.

Gemstones Of The World by Walter Schumann.

The Audubon Society Field Guide To North American Rocks And Minerals by Charles W. Chesterman.

Gems, Crystals, & Minerals by Anna S. Sofianides & George E. Harlow

Amethyst Galleries Mineral Gallery on the internet at <http://mineral.galleries.com>.



The SFMS Wildacres Workshops are online. Please go to sfmsworkshops.org for class descriptions and instructor bios. Below is a list of classes. They're starting to fill up, so don't wait too long.

William Holland has been cancelled for 2021

SFMS Wildacres Workshops

8/23-29/21 & 9/13-19/21

August 23-29, 2021

Janson Hamilton - Silver II - Filigree
Cindy Moore - Metal Mania
Jeff Sheer - Special Projects
Morning Sherrod - Southwest Silver
Rowan Morgan - Wire Wrap
Bill Harr - Casting

September 13-19, 2021

Chuck Bruce - Silver III - Inlay II
Cindy Moore - Metal Mania
Mary Lou Hillenbrand - Chain
Bill Harr - Casting
Jerri Heer - Gem Trees
Tom Slavicek - Leather

For more information contact the SFMS WA-Registrar:
Claudia Erwin
registrarwildacres@gmail.com
or Call: 865-973-1933

Club contacts

President: Melissa Horan 1178 Firthview Dr, Melbourne, FL 32935, (321)960-4134

Vice President: Nancy Stark, 1610 Sutschek St. NE, Palm Bay, FL 32907, (321)749-7675

Secretary: Mary Kinberg, 245 Hedgecock Ct., Satellite Beach, FL 52937, (321)223-4260

Treasurer: Liz Ritter, PO Box 500827, Malabar, FL 32950, (321)544-2036

Bulletin Editor: Shannon Byrd, 2225 Ladner Rd. NE, Palm Bay, FL 32907, (321)541-7230

Membership Chairman: Kathie Burnette, 554 Veracruz Blvd, Indialantic, FL 32903, (321) 693-9719

Education Chairman: Dave Wayment, PO Box 780791, Sebastian, FL 32978, (772)532-6432

Corresponding Secretary: Lynn McKinney, 3537 Sparrow Ln, Melbourne, FL 32935, (321)427-24460

Board of Directors 3yr: Keith Stokes, 601 Georgia Ave., Melbourne, FL 32901, (321)266-8707

Board of Directors 2yr: Dave Jacobson, 672 Manor Place, West Melbourne, FL 32904, (321)676-4306

Board of Directors 1yr: Mark Heathman, 4166 Mockingbird Dr., Melbourne, FL 32934, (321)253-2856

Board of Directors (Past President) 1yr: Don Mc Lamb, 570 Seabreeze Dr, Indialantic, FL, 32903, (321) 723-2592

Librarian: Sue Diebel, 35 Sapphire St. Melbourne, FL 32904, (321)704-3198

Bulletin Editor

Shannon Byrd

2225 Ladner Rd NE

Palm Bay, FL 32907

Email: shannonb787@gmail.com

The Canaveral Mineral and Gem Society meets the First Wednesday of each month at the Front Street Civic Center, Melbourne, Florida. The time of the Meeting is 7:00PM . Visitors are always welcome.

CANAVERAL MINERAL & GEM SOCIETY
NEWSLETTER: MOONSTONE