

# Canaveral Moonstone



## Presidents Corner

**Thank you for reading the Moonstone to stay up to date with events in our community.**



Some great events happened in February. Our sister club's gem show went off without a hitch at the Kiwanis center. New and returning vendors and fun activities made this a unique show. The oddities festival in Vero saw a couple new rock vendors this year and was great for generating interest in our club. Ron's rock sale in Port St Lucie is always a fun event for your members. Tucson gem shows are starting to wrap up in the west but the shows in the southern region are just getting started. Garlic fest at Whickham park will wrap up February's events.

I'm looking forward to seeing everyone again at this month's meeting on March 4th where Thomas Edmond will do a presentation on an introduction to gemology! How cool! Bring a gemstone for show and tell and a snack to share.



March and April are going to be months for pure adventure. Come on out to the SFMS Rockhound roundup March 6-8 at the live oak music park. SFMS members will be camping and selling rocks from the southern region.

The Rucks Pit Calcite Clam Festival in Okeechobee, FL will take place on March 19-21. Get your tickets now for this premium experience and dig your own crystalized aquatic fossils. Wrapping up the month will be our annual CMGS rock swap at Whickham park. The fun will continue in April with the Wikiva rock swap, Dolly's picnic, the Graves mountain public dig and rock swap, Diamond hill mine in Abbeville SC, and rubies in Franklin, NC. If you want to go on these adventures you can contact James for more info.

Sign up for the CMGS annual rock swap asap! Thank you Shannon for coordinating the tables. Spaces are \$25. we will be at pavilion 4 at Wickham park on March 28th. Come on out and support your fellow club members and get some great deals on rocks and equipment.

Dolly's picnic will be April 19th at Riverview park. There will be burgers and hotdogs. Please bring a side to share and any items you are willing to part with to support the club. All items are welcome not just hobby related stuff. Keep in mind that you will have to take home any items that you bring that do not sell.

The Dave Wayment scholarship winners have been announced and confirmed. Winners will go the lapidary schools to bring back precious knowledge to share with our club. Education is a primary goal for our club so thank you to everyone who contributed to our fund this year by participating in raffles, auctions, and activities.



Links to CMGS

Exchange Bulletins are Welcome

(All material may be copied unless otherwise noted if credit is given)

The Dead Line for the April Moonstone is March 20, 2025

The URL for CMGS web site is: <http://www.canaveral-mgs.com/>

The **Canaveral Mineral and Gem Society (CM&GS)** is a registered Florida not-profit-corporation approved by the Internal Revenue Service as a tax exempt , organization under Internal Revenue Code section of Florida 501 (c) (7) for the following purposes:

1. For the preservation, support, and promotion of the hobby of Mineralogy and its various forms of allied activities and earth sciences.
2. To dedicate ourselves to the furtherance of the hobby through the exchange of knowledge, experience, and other helpful information among ourselves and other like organizations.
3. To further the education of members and the general public of the hobby by programming talks, discussions, motion pictures, field trips, and the staging of shows and exhibitions.
4. To maintain an active affiliation with the Southeast Federation of Mineralogical Societies and to participate in Federation activities to the fullest extent possible.

### **Goals and Objectives**

5. To promote the spirit of cooperation and fellowship among the membership.
6. To increase our knowledge of rocks and minerals and to explore the mystery and wonder of the earth.
7. To actively encourage members to attend educational classes, workshops, lectures, and demonstrations.
8. To stimulate interest in the earth sciences within the community by providing scholarships to worthy students at all educational levels.
9. To provide the necessary equipment and resources to enable members to develop their interests.
10. To enjoy our hobby and Have Fun!

### **Affiliations**

The Canaveral Mineral and Gem Society is a member of the Southeast Federation of Mineralogical Societies (SFMS) and the American Federation of Mineralogical Societies (AFMS)

### **Meetings and Dues**

Meetings are the First Wednesday of each month at the Melbourne Front Street Civic Center. Meetings start at 7:00 p.m. Visitors are always welcome! Dues are shown below and are paid annually.

Active members \$ 40.00

Associate Type 1 \$ 10.00-related to an active or honorary member, be under the age of eighteen .

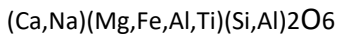
Associate Type 2 \$ 20.00 - 13 – 18 years

# March 2026

Sun	Mon	Tue	Wed	Thu	Fri	Sat
1	2 Open Shop 5:30—9:30pm	3	4 Monthly	5 Open Shop 5:30—9:30pm	6	7 Open Shop 10am-2pm
8	9 Open Shop 5:30—9:30pm	10	11	12 Open Shop 5:30—9:30pm	13	14 Open Shop 10am-2pm
15	16 Open Shop	17	18	19 Open Shop	20	21 Open Shop
22	23 Open Shop 5:30—9:30pm	24	25	26 Open Shop 5:30—9:30pm	27	28 Rock Swap—Shop closed
29	30 Open Shop 5:30—9:30pm	31				

Shop fee will be \$5.00 from now until the end of May 2026.

## MINERAL OF THE MONTH AUGITE



Augite is a member of the clinopyroxene subgroup in the pyroxene group. Its structure is monoclinic forming into, stubby prismatic crystals of square or octagonal up to 10cm in length. Can be elongated, acicular, skeletal and dendritic varieties. With the colors of black, brown, greenish and violet-brown being the most prevalent. MOHS hardness of 5 1/2-6. Augite is found in mafic igneous, ultramafic, high grade metamorphic rocks worldwide.



**Canaveral Mineral and Gem Society  
February 4th, 2026 Meeting Minutes**

Vice President Lynn McKinney opened the meeting on Wednesday, Feb. 4th, at 7:02 p.m. at the Front Street Civic Center, 2205 Front Street, Melbourne, FL 32901.

Lynn welcomed guests and new members. One new member is interested in carving.

In March James will run the meeting.

Pet of the month in the Moonstone is Remy the cat

The presentation was on Pulse arc welding by Bill Haar. It is a type of TIG welder. The kit for the welder did not include argon gas. TIG uses a titanium electrode to do electric welding with a short zap. He got interested in this to fuse cast flowers to a hair comb. He wanted metal to metal connection to avoid the thermal stresses of a metal adhesive. Pulse arc is bright enough to damage your eyes. He is using an auto damping welder's helmet. Welder settings have power and duration. Argon gas is a small bottle that cost >\$80. It is used for permanent jewelry. This is where a piece of leather to insulate the pulse arc welder heat from the body is used to weld bracelet together. He demonstrated a weld using a 3<sup>rd</sup> hand with a locking tweezer for one side of piece and uses another hand to hold the other side of piece. Power level is critical for a good weld. Argon gas keeps joint from oxidizes.

His new casting class is looking to do bronze, argentum and pewter with sand casting as a method.

**Announcements:**

Class book is in the back of the room for sign up.

Looking for someone to take over the newsletter.

Upcoming events are in the Moonstone on line like

Central Brevard Show is in Merritt Island is Feb. 7th and 8<sup>th</sup>

Suncoast Gem & Mineral Society has annual show on March 6-8<sup>th</sup> in Clearwater Fl

Looking for donations for Dolly's picnic at Riverside Park.

Central Brevard Artist Association Valentine Show is at Cape Canaveral Library

There is a Private Rock Sale in Port St Lucie

Next DMC is at mine in South Carolina

Rucks Pit is having a Festival at a fee of \$300

Open Dig at Graves Mountain -

Pizza will be offered on next Monday at 5:30 at the workshop.

Wayne is offering help every Monday night and can help with the cabbings. The shop supervisor can help with your piece if you have a problem or question.

Please pay dues if you have not done so already. You are dropped from the course list if you are not paid up

Looking for an Outreach Coordinator. If interested please contact James.

Shop fees are reduced to \$5/month till May 2026.

We are looking for volunteer shop steward or stand by shop steward

We are looking for individuals to teach class

Raised \$1000 in shop fees in Jan.

*Vice- President Report*, Lynn McKinney Always looking for volunteers to present at the monthly meeting.

*Treasurer's report*, Candace was not present. Yvonne expressed that we were on budget for education and have bought supplies for the shop. Expect a finalized 2026 budget to be approved this month.

*Secretary*, Stephanie Hopper, January minutes were printed in the Moonstone. Floor was asked for changes. As there were no changes or amendments the minutes will stand as printed in the Moonstone.

*Membership*, Sharon Barhorst, We now have 103 members. 16 signed back up tonight

*Education Director* - Yvonne Alexander – Raffle is important as it sends members to class. Added new class to make stone knife with a minimum age of 14. Enameling has been removed from class book as instructor has no time at this time. Contact her if you could teach a short pop up (1 Hr class). Would like 2 more class in the chain mail class. She described the summer camp education classes that are raffled. You get put in the drawing for every meeting you attend. Drawing is held tonight.

Someone asked if there is a minimum age for the club. There is no age minimum for the club. The minimum age requirements are in the class schedule for each class.

Scott and Wayne will be teaching cab class

There are slabs and magazines available for free at the back table.

Drawing for CMGS Sponsored Classes:

Winner 1 - Jim Price

Winner 2 - Bob Denaburg

Winner 3 - Ed Otto

Alternate 1 - Wayne Mellish

Alternate 2 - Mary Barrett

Alternate 3 - Jennifer Davidson

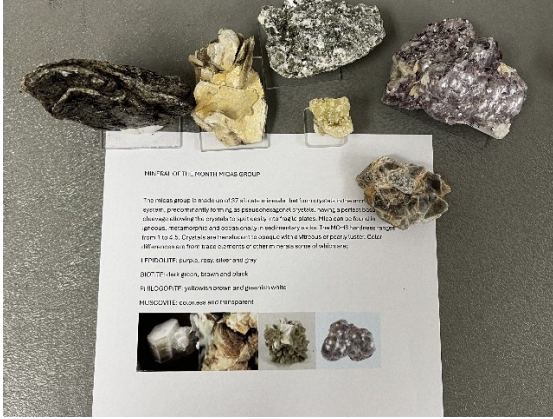
Liz – 10 or 12 items will be raffled to help send members to class in the summer camp to Wild Acres or Will Holland

Thanks for sharing all the great Show and Tell. Mineral of the Month is the Mica Group

The meeting was adjourned at 9:04 pm.

Respectfully,  
Stephanie Hopper

# SHOW AND TELL PICTURES



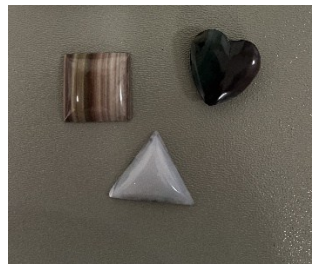
Mineral of the Month – Mica Group



Bill Haar presenting on Pulse Arc Welding



Ileana Tibuleac-Triangle and Teardrop Cab



Scott Bellinger-Cabs



Ed Kinberg-Metal Flame Painting Slab Saw Pieces



Alexandros Lewis – Cabs and Wire Wrap



Connie Hayes – Laguna Lace Agate & Royal Imperial Jasper





Debbie Jorgensen-Square Cab & Knife



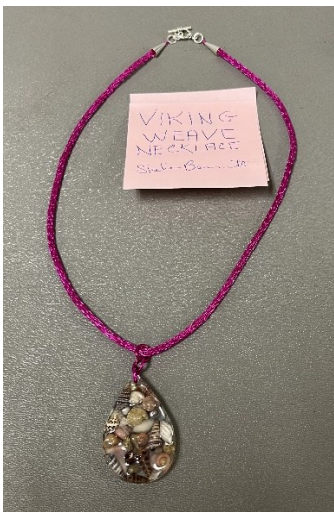
Wayne Mellish- Wire Wrap and Misc. Cabs



Steph Hopper- Beading



Wayne Mellish- Oval and Advanced Cabs



Shelie Bennett- Viking Weave Necklace

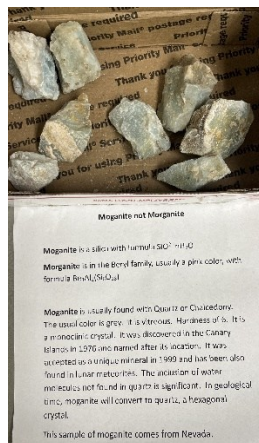


Elizabeth Hildreth- Cabs, Wire Wrap Necklaces Vacuum Tube Jewelry

# Show And Tell



Yvonne Alexander- Cabs, Cabs Knife & Wire Wrap Bracelet



Morganite samples



Free Slabs donated by Joe Bina

## Bench Tips by Brad Smith

**Work Smarter & Be More Productive With Brad's "How To" Jewelry Books**  
**See Other Tips in my Smart Solutions for Jewelry Making Problems**  
<http://amazon.com/dp/B0BQ8YVLTJ>

### BEZEL CLOSER

A bezel closer is a steel punch that makes quick work out of pushing the metal down over a round stone and burnishing it. It works with regular bezels, with tube settings, and with prong settings. Stones can be set in as little as 30 seconds.

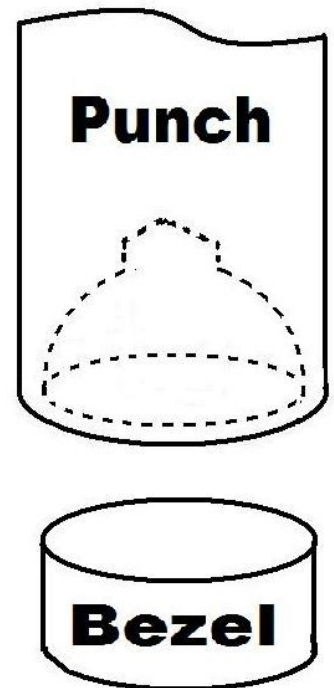
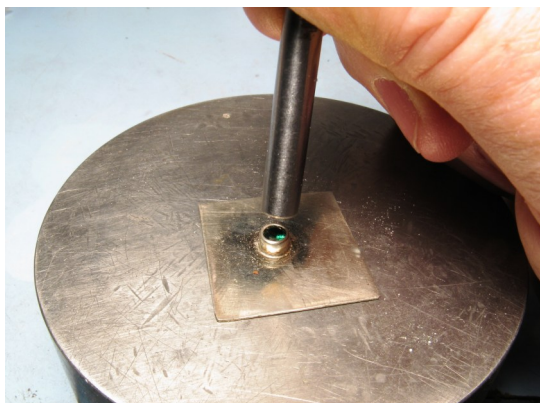
The working end is a concave cavity that fits over the bezel or prong setting and is pushed and twisted to capture the stone. Sets can be purchased but are expensive and contain many sizes you will probably never use. If all you need is one or two sizes, here's how you can make them yourself.

Find a round steel rod or bolt a little larger in diameter than your bezel cup or prong setting. Cut a 5 inch length. File both ends flat. Locate the center of one end, center-punch a divot, and drill a small pilot hole about 5 mm deep. Remember to use a little oil as lubricant when cutting steel.

Select a ball bur a bit larger than the bezel. Enlarge the pilot hole to a full hemispherical cavity. Test for proper fit with your bezel. Bezel should first contact the cavity about a third of the way in. When the size is correct, polish the cavity using Zam on a length of chopstick in your flexshaft. If the tool is not polished, it will leave scratches on your bezel or prongs.

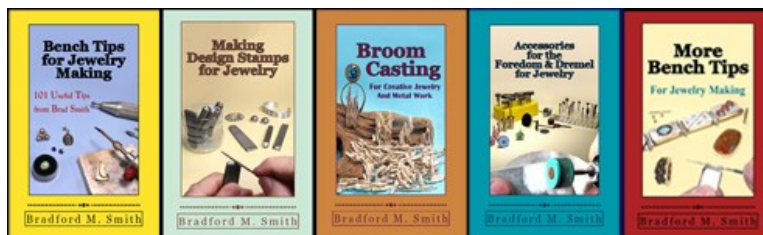
When using the tool, the first step is to capture the stone correctly. I usually work by hand and push the punch straight down over the bezel or prongs. This causes the metal to start bending over the stone. The next step is to inspect the stone with a lens to be sure it is staying level. Repeat until the stone is seated on its bearing and can't move anymore.

Finally, force the metal down onto the stone uniformly all the way around. While this can be done by hand, I often gently tap the punch with a hammer. Finish by twisting the bezel back and forth to burnish the top of the bezel.



Solve Your Jewelry Making Problems  
 With Brad's "How To" Books

[www.amazon.com/author/bradfordsmith](http://www.amazon.com/author/bradfordsmith)



Panhandle Gem & Mineral Shows - 02/27/2026

Start Date: 02/27/2026  
 End Date: 03/01/2026  
 Hours: 10 a. until 5 pm  
 Venue: North Florida Fairgrounds  
 Address: 441 E. Paul Russell Road  
 North Florida Fairgrounds  
 Tallahassee, FL 32301  
 Website: <https://www.panhandlegemandmineralshows.com/>

55th ANNUAL GEM AND MINERAL SHOW - 03/06/2026

Start Date: 03/06/2026  
 End Date: 03/08/2026  
 Hours: Fri/Sat 10:00-6:00 Sun 10:00-5:00  
 Venue: POLISH CENTER OF JOHN PAUL II  
 Address: 1521 N SATURN AVE  
 POLISH CENTER OF JOHN PAUL II  
 CLEARWATER, FL 33755  
 Website: <https://sites.google.com/sgams.com/sgams/home>  
 Suncoast Gem & Mineral Society

Florida's Fine Gem, Jewelry & Mineral Show - 03/27/2026

Start Date: 03/27/2026  
 End Date: 03/29/2026  
 Venue: Robarts Arena  
 Address: 3000 Ringling Blvd  
 Robarts Arena  
 Sarasota, FL 34247  
 Website: <https://www.mineralshows1ld.com/>

**CMGS Rock Swap**

**March 28, 2026 from 8:30 to 3:30**

Location : Wickham Park pavilion #4 It is on the East side of the North lake next to the restroom building.

Enter Wickham park from the South entrance off Parkway Dr. - Turn right and follow road around the first lake to the 2nd lake (north lake) - Pavilion #4 is on your left about middle of the lakes east side.

No fee to browse/shop/swap. Visitors are welcome

There are 20 picnic tables under the pavilion cover. Dealers pay \$25 fee to sell their stuff. The grass area is open but still \$25.

Tell your friends to come and spend the day looking at rocks, gems, jewelry. Bring families and friends and have a good time in the park. Sail a boat on the lake, relax in the sun, watch the kids play in the play area or play with your dog in the fenced dog park area.

Contact info: Shannon Byrd 321 223 4007 leave a message if I do not answer. I will call back asap. You can also contact me via email at "ShannonB787@gmail.com".

Panhandle Gem & Mineral Shows - 04/10/2026

Start Date: 04/10/2026  
 End Date: 04/12/2026  
 Hours: 10 am until 5 pm  
 Venue: Central Panhandle Fairgrounds Panama City  
 Address: 2230 East 15th Street  
 Central Panhandle Fairgrounds Panama City  
 Panama City, FL 32405  
 Website: <https://www.facebook.com/profile.php?id=61567559250916>

**Circle Up Rock & Gem Market**

April 11, 2026, 9:00 am – 3:00 pm

Westside Community Church, Front Lawn & Drive Circle  
 1937 Lakeville Road, Apopka, FL

contact Nancy Allman, 407-739-0051 or email [@faceittoday@gmail.com](mailto:@faceittoday@gmail.com).

**Dolly's picnic April 12**

Come enjoy the tailgating , lunch and the auction with CMGS friends and family's

Riverside park, Melbourne

**Central Florida Mineral & Gem Society**, Inc., a non-profit 501(C)3 educational organization, is hosting a Rock, Mineral, Gem, Jewelry & Fossil Show on April 18th and 19th, 2026 at the Florida National Guard Armory, 2809 S. Fern Creek Ave., Orlando, FL 32806. Show time: Saturday 9am to 5pm and Sunday 9am to 4pm. Vendors offering rocks, minerals, gemstones, fossils, beads, jewelry, artifacts, metaphysical stones, handcrafted cabochons, etc. Silent auction, door prizes, demonstrations and family activities. Admission fee: Adults \$6, Kids \$3 and Scouts in uniform free. Website: [www.cfmgms.org](http://www.cfmgms.org). Contact: President Salvatore Sansone [321-278-9294](tel:321-278-9294) or e-mail: [ssfossilhunter@aol.com](mailto:ssfossilhunter@aol.com).

**SFMS Workshop information**

**You can check out the classes and register at <https://www.sfmsworkshops.org/> Details of lapidary classes for wildacres. <https://www.sfmsworkshops.org/> shows details for William holland**

# Pet of the month



Bambam  
needs a new  
home.

Riley's res-  
cure of Bre-  
vard.

[www.rileysrescueofbrevard.org](http://www.rileysrescueofbrevard.org)

321-291-4030

[adopt@rileysrescueofbrevard.org](mailto:adopt@rileysrescueofbrevard.org)

## Club Donations Needed

Dolly's Picnic donations: Please bring donations to the monthly meeting or (if larger amounts) arrangements can be made to pick them up. Contact Michael McKeon at [memckeon@yahoo.com](mailto:memckeon@yahoo.com)

Items we need for the auctions include:

Rocks of any kind

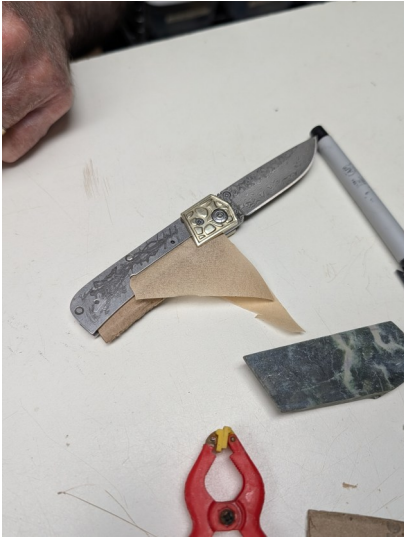
Crystals / Gems

Beads and beading findings

Craft Items

The following members have completed the classes listed below.

Everyone had a great time with Arthur's Advanced Cabbing class. Some of us learned how to design a cab to fit a knife and also how to cab a triangle, teardrop and square shape stone too. We learned a lot of great techniques.



## **CMGS Contacts**

**President:** James Hislop (407)797-2391

**Vice President:** Lynn McKinney

**Secretary:** Stepphanie Hopper

**Treasurer:** Candice Walker

**Bulletin Editor:** Shannon Byrd (321) 223-4007

**Membership Chairman:** Sharon Barhorst

**Education Chairman:** Yvonne Alexander

**Corresponding Secretary:** Stephanie Murphy

**Board of Directors 3yr:** Vince DiDio

**Board of Directors 2yr:** Wayne Mellish

**Board of Directors 1yr:** Liz Ritter (321) 544-2036

**Librarian:** Matty Loss

Do you need transportation to the monthly meeting? If so, contact James Hislop to coordinate a ride.

**Bulletin Editor**

Shannon Byrd

2225 Ladner Rd NE

Palm Bay, FL 32907

Email: shannonb787@gmail.com

The Canaveral Mineral and Gem Society meets at 7 pm on the First Wednesday of each month at the Front Street Civic Center, Melbourne, Florida. Visitors are always welcome.

**CANAVERAL MINERAL & GEM SOCIETY**  
255 East Drive  
Melbourne, Florida  
**NEWSLETTER: MOONSTONE**